

Lesson 31

I Get Up at 9 O'clock



Listen to the dialogue.

Dialogue

Rio: What time do you go to bed?

Bo: I go to bed at 1 o'clock.

Rio: What time do you get up?

Bo: I get up at 9 o'clock. How about you?

Rio: I get up at 7:30.

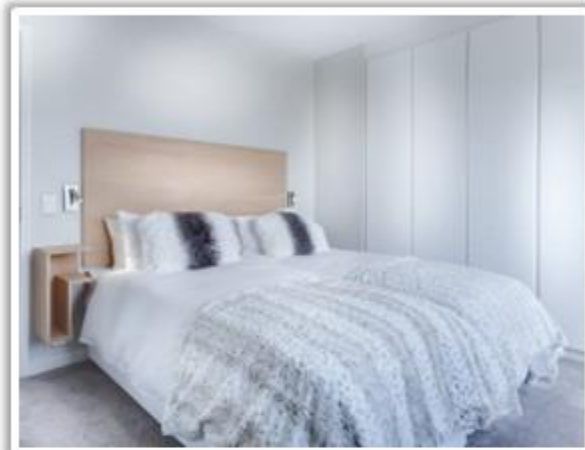


Listen, repeat and learn.

Words



time



bed



clock



get up

Rio: What time do you go to bed?

Bo: I go to bed at 1 o'clock.

Rio: What time do you get up?

Bo: I get up at 9 o'clock. How about you?

Rio: I get up at 7:30.



1. What time does Bo go to bed?

A. at 1 o'clock

B. at 9 o'clock

C. at 7:30

2. What time does Bo get up?

A. at 1 o'clock

B. at 9 o'clock

C. at 7:30

3. What time does Rio get up?

A. at 1 o'clock

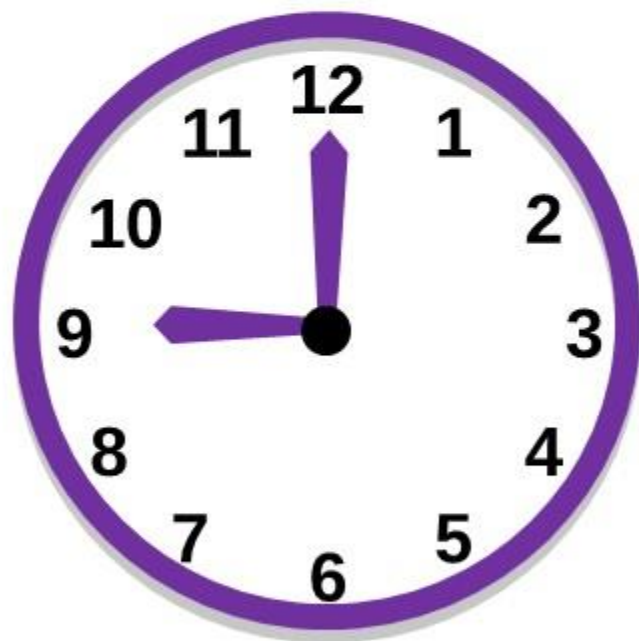
B. at 9 o'clock

C. at 7:30

Listen and say.

Expressions

how to tell time



hour minute

9:00

nine o'clock

6:00

8:00

10:00

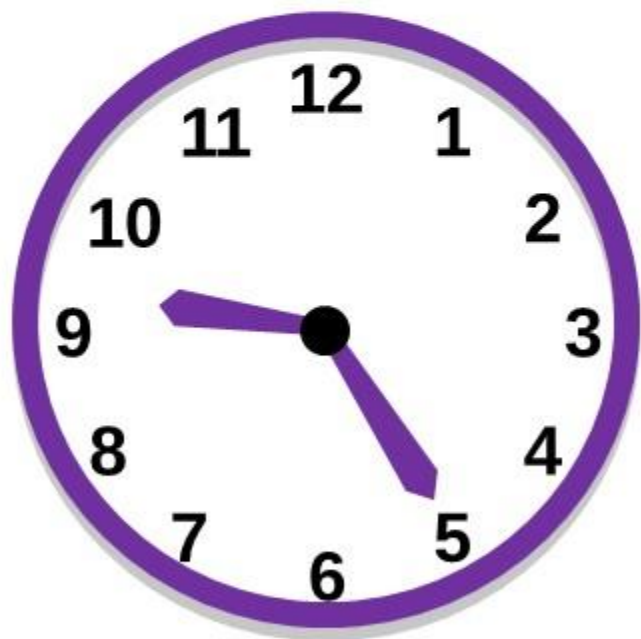
12:00

Tip: We say "o'clock" at the exact hour.

Listen and say.

Expressions

how to tell time



hour minute

9:25

nine twenty-five

5:55

7:28

11:13

12:10

Tip: We **do not** say "o'clock" when there are minutes.

daily routine

the **things** we do **every day**

7:30



I **get up** at 7:30.

7:40



I **brush my teeth** at 7:40.

8:05



I **take a shower** at 8:05.

Make sentences.

Check



eat breakfast



go home



go to work



watch TV

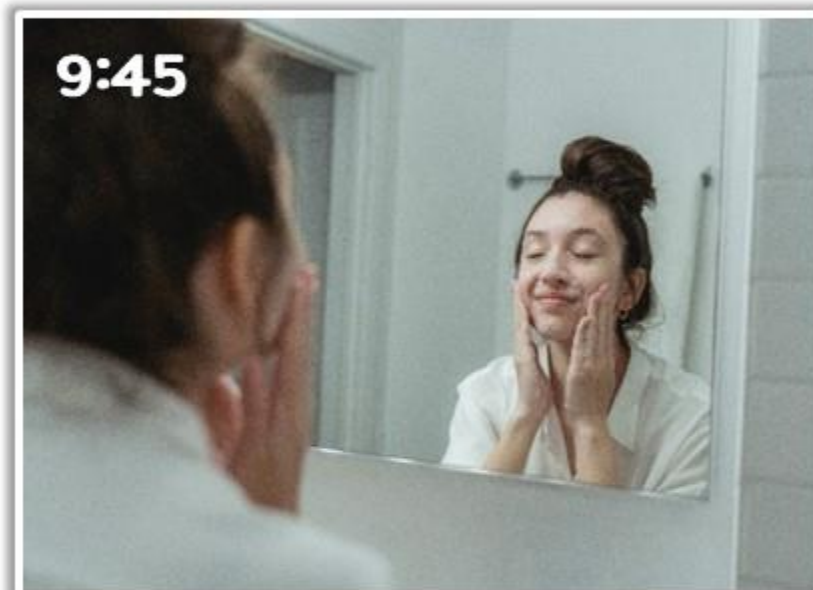
Listen, repeat and learn.

Expressions



What time do you eat dinner?

I eat dinner at 8 o'clock.



What time do you wash your face?

I wash my face at 9:45.

Answer the questions.

Check

7:00



What time do you cook dinner?

I cook dinner at _____.

10:30



What time do you go to bed?

_____.

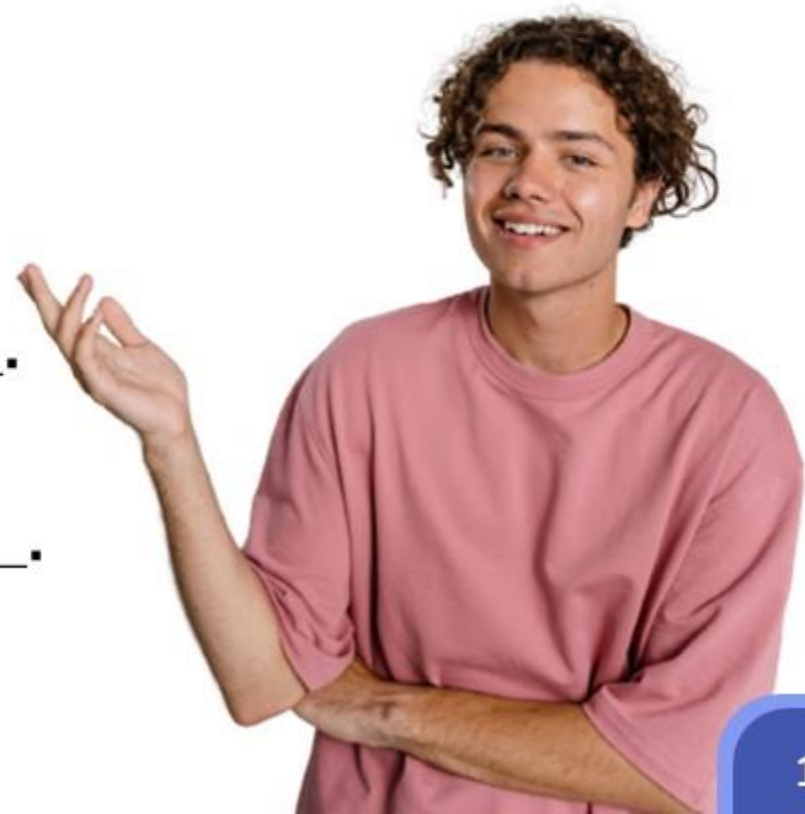
Hi, I'm _____. Every morning, I get up at _____.

I take a shower at _____. I eat breakfast at _____.

I go to work at _____. I go home _____.

I cook dinner _____ and eat it _____.

I wash my face _____. I go to bed _____.



The background image shows two young women standing outdoors in front of a large, multi-story red brick building, likely a school. The woman on the left has long, dark, wavy hair and is wearing a white long-sleeved shirt. The woman on the right has dark hair pulled back and is wearing a white short-sleeved shirt with a lace collar. They are both looking at each other and appear to be in conversation. The scene is set on a grassy area with trees in the background.

Fill in the blanks, and do a role-play.

Role-Play

Hi, Mika. What _____
do you eat lunch?

I eat lunch at 12:30.

_____ go home at 4:30.
How about _____ sister?

I eat lunch _____ 12:00.
How about you?

_____ time do you go
home?

Sorry. I don't know.

You are talking with a friend at school.