




Unit 2 Lesson 9 – Kyoto is fantastic and one of a kind.



Identify whether the sentence should be in the **Present Perfect** or **Present Perfect Progressive** and explain why.

1 She _____ (eat) 3 bowls of ramen. She feels sick now.

2 Max _____ (sketch) since 8 am. He still has 3 more to finish.

3 I _____ (own) a Ferrari since I was in university.

Introduce today's sentences.

Grammar Focus

- Gradable Adjectives: Degrees of Comparison (Review)
- Non-gradable Adjectives



Key Expressions

- Kyoto is fantastic and one of a kind.
- Kyoto is the most rewarding city in Japan.

Listen to the teacher and repeat.



one of a kind



rewarding



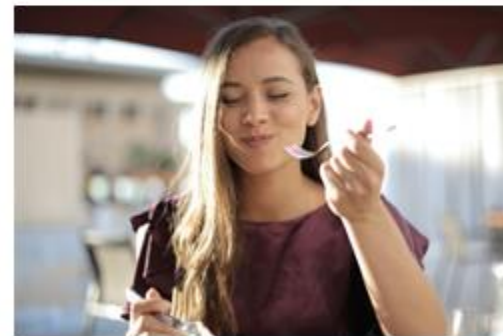
destination



Zen garden

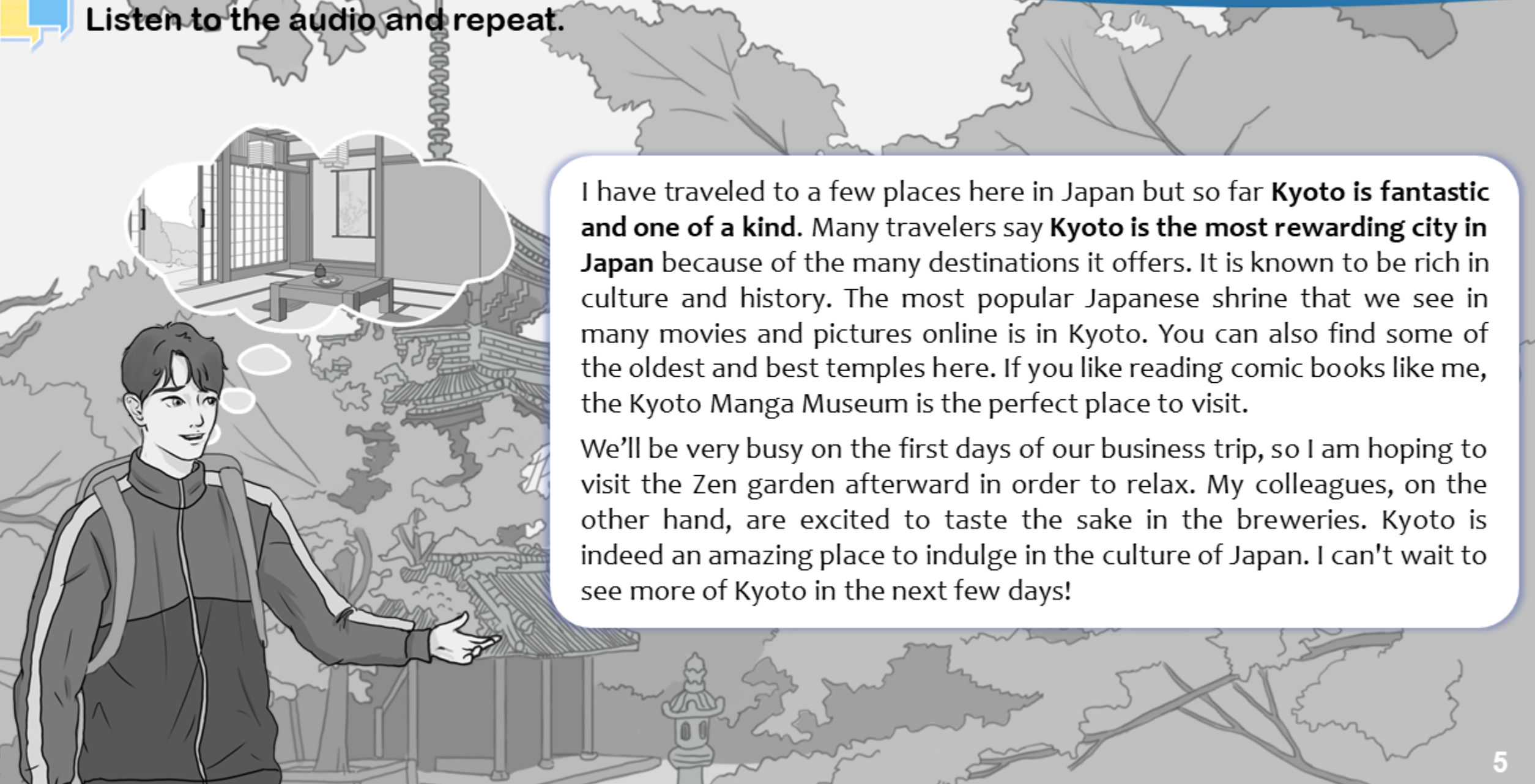


brewery



indulge

Listen to the audio and repeat.



I have traveled to a few places here in Japan but so far **Kyoto is fantastic and one of a kind**. Many travelers say **Kyoto is the most rewarding city in Japan** because of the many destinations it offers. It is known to be rich in culture and history. The most popular Japanese shrine that we see in many movies and pictures online is in Kyoto. You can also find some of the oldest and best temples here. If you like reading comic books like me, the Kyoto Manga Museum is the perfect place to visit.

We'll be very busy on the first days of our business trip, so I am hoping to visit the Zen garden afterward in order to relax. My colleagues, on the other hand, are excited to taste the sake in the breweries. Kyoto is indeed an amazing place to indulge in the culture of Japan. I can't wait to see more of Kyoto in the next few days!



Review the Degrees of Adjectives



Gradable Adjectives

Adjectives that can be made stronger or weaker and have a comparative and superlative form.

	Positive	Comparative	Superlative
One-syllable	cold nice	colder nicer	coldest nicest
Two-syllable	angry common	angrier more common	angriest most common
Three-syllable	rewarding expensive	more rewarding more expensive	most rewarding most expensive
Irregular	good bad	better worse	best worst

- **Comparative:** It is **colder** in Alaska **than** Chicago.
- **Superlative:** Kyoto is **the most rewarding** city in Japan.

ADVERBS

We usually use adverbs like **very, fairly, a little, extremely, etc.** to make gradable adjectives stronger or weaker.

- It's **extremely cold** in Alaska.
- It's **very cold** in Chicago.
- It's **fairly cold** in California.

Learn more about non-gradable adjectives.

ADVERBS

We can use adverbs like **totally**, **absolutely**, and **completely** to emphasize non-gradable adjectives.

- It is **totally freezing** in Alaska.
- She is **absolutely furious**.

✗ very freezing ✗ more freezing
✗ very furious ✗ most furious



Non-gradable Adjectives

Adjectives that don't normally have a comparative and superlative form. Also called "**Extreme Adjectives**"

Gradable	Non-gradable
cold	freezing
tasty	delicious
smart	clever
ugly	hideous
angry	furious

very + adjective = **non-gradable adjectives**

The dog is **very fat**. = The dog is **obese**.

My drawing is **very ugly**. = My drawing is **hideous**.

The food is **very tasty**. = The food is **delicious**.



Gradable Adjectives

cold – colder – coldest

hot – hotter – hottest

large – larger – largest

small – smaller – smallest

good – better – best

bad – worse – worst

pretty – prettier – prettiest

ugly – uglier – ugliest

hungry – hungrier – hungriest

clean – cleaner – cleanest

funny – funnier – funniest

Non-gradable Adjectives

freezing

boiling

huge / enormous

minute

excellent / fantastic

terrible

gorgeous

hideous

starving

spotless

hilarious



Underline the correct word/phrase.

1. The food in Hong Kong is **the most delicious** / **delicious**.
2. It is **a little** / **totally** boiling in the town where they live.
3. Janet is **the prettiest** / **the very prettiest** girl in her class.
4. Horror movies have **totally** / **extremely** hideous monsters.
5. You should feed the cats. They are **the most** / **absolutely** starving.
6. Leo's grandma cooks **tasty** / **more tastier** / **most tastiest** food.
7. Wow! Your house is **most spotless** / **extremely spotless** / **spotless**.
8. Jonathan's house is **larger than** / **huge** / **more huge than** Antoni's.

Circle the **non-gradable** adjective in each sentence.
Match them to their equivalent **gradable adjective** on the right.

Non-gradable**Gradable**

b.

The elephants in the zoo were enormous.

1. Jenna and Mary were elated when they got their first job.

2. The dogs made a mess. It's filthy here!

3. The ancient painting will be in the museum downtown.

4. It was miserable seeing the homeless people in the street.

5. I think crocodiles are absolutely terrifying.

6. The test was endless. It took 5 hours to finish it.

a. old

b. big

c. dirty

d. sad

e. long

f. happy

g. scary



Situation: Share about the food from 3 different cities/countries that you have tried. Compare and rank them from least to best. Use the grammar you learned today. (Gradable and Non-gradable Adjectives)



Word Focus

one of a kind
Zen garden

rewarding
brewery

destination
indulge

Grammar Focus

- Gradable Adjectives: Degrees of Comparison (Review)
- Non-gradable Adjectives