

Topic

Conversation for Beginners

Lesson 10 Dishware

A

- What are these for?
- Where do we see them?





Target Language

In this lesson, we will learn **about dishware**:

- know the things where we put our food;
- learn expressions when giving an offer;
- learn how to express a warning out of anger.

Key words:

plate

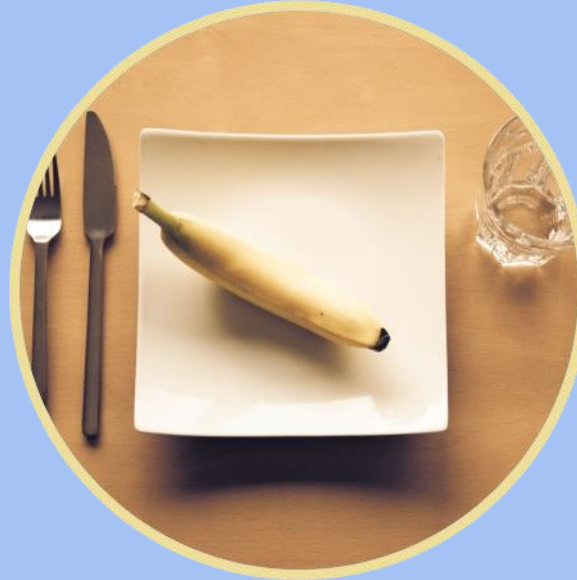
bowl

cup

saucer

Key Words

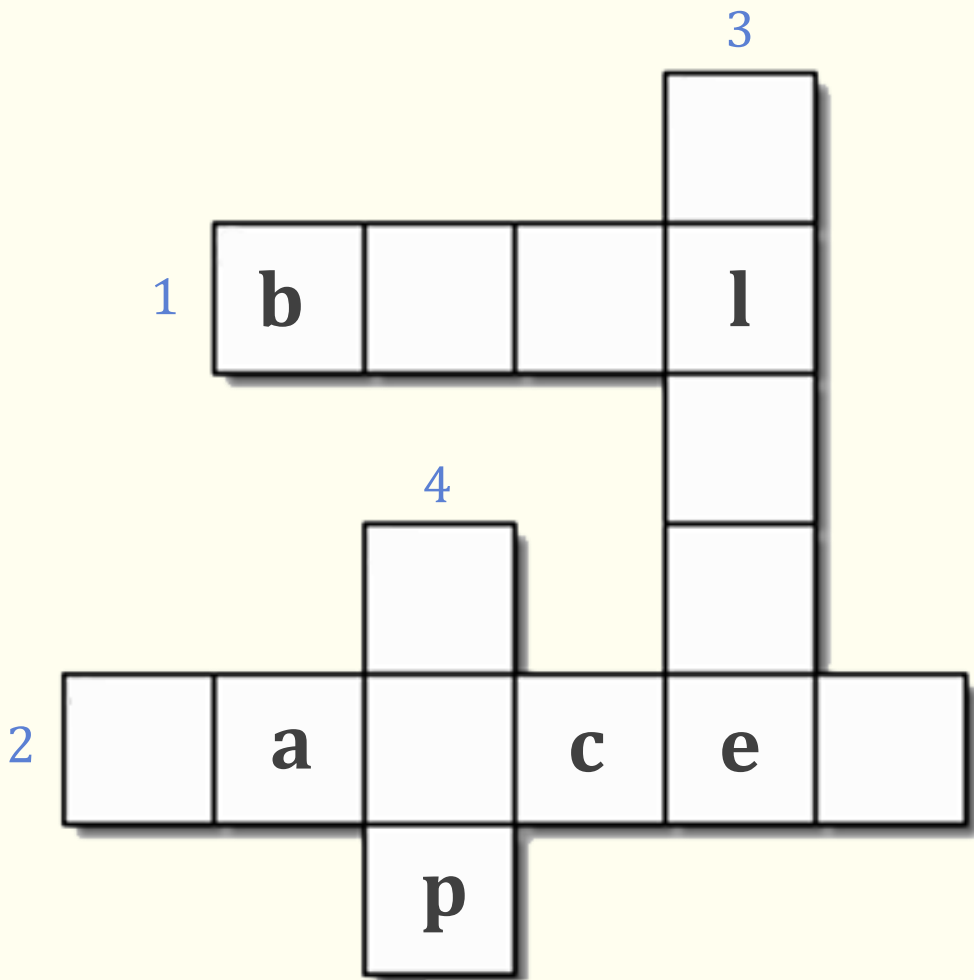
Learn the new words and match.



- bowl
- cup
- plate
- saucer



Complete the crossword puzzle about dishware.



ACROSS

1. A round dishware sometimes used for drinking soup.
2. A small dishware.

DOWN

3. A thing where we put our main food.
4. Used for drinking tea or coffee and other drinks.

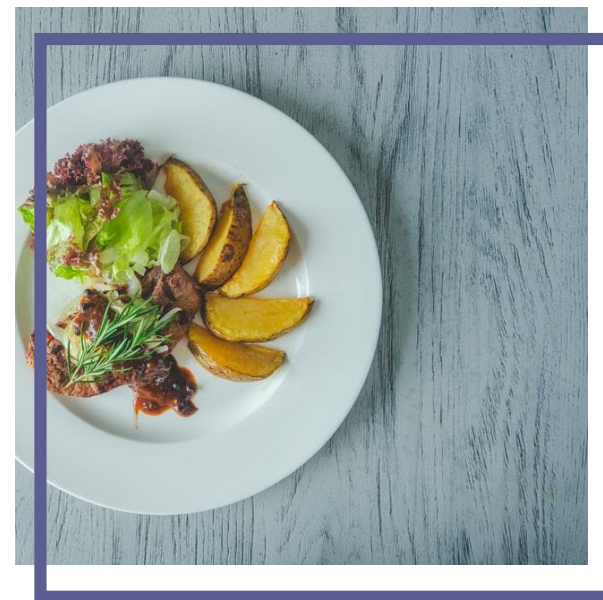
Key Sentences

Read and share your opinions.

1. Don't break my favorite **plate**, or else!

Questions:

1. What will you do if someone breaks your plate?
2. What do we put on a plate?



Key Sentences

Read and share your opinions.

2. Here, have a **bowl** of strawberries.

Questions:

1. What do we put in a bowl?
2. If you have a bowl right now, what would you put in it?



Key Sentences

Read and share your opinions.

3. Would you care for a **cup** of tea?

Questions:

1. How many cups of tea/coffee can you drink in a day?
2. Do you offer visitors something to drink?

What do you say?



Key Sentences

Read and share your opinions.

4. I use this **saucer** to support my cups. I also use it to put a piece of cake.

Questions:

1. Aside from cake, what other food do you put on a saucer?



Conversation

Listen to the audio and do a role play.

John and Yuka are having a conversation in the kitchen.



John

I'm hungry, Yuka. Do you have anything to eat?



John

Have a bowl of strawberries on the table.

Thanks. Hey, what's this? This plate looks nice.

Don't touch that! Don't break my favorite plate, or else!



John

Okay, okay! I'm sorry!



Yuka



Yuka



Semi-open Role Play

Have a role play with your teacher with the given scenario and hints.

Scenario

You invited your friend to your place.
Offer your friend something to eat or drink.

Hints:

- Would you care for..?
- Have a/an/some...
- I also...

Review

Answer the questions and share your opinions.



Self-check



1. A dishware usually used for tea and coffee. What is it?
2. A dishware that looks like a small plate. What is it?
3. When will you use a bowl?
4. What is a plate used for?

