

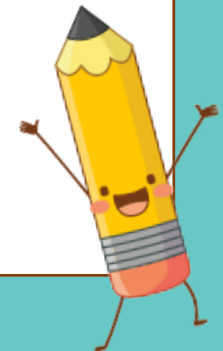
# SPEECH PRACTICE

Day 1



# LESSON FLOW

- 1. Q and A (checklist)**
- 2. Speech Practice**
- 3. Feedback**
- 4. Homework**



**SPEECH  
PRACTICE**

**Q & A**

# Q&A –checklist–

1. When should your teacher correct you?

- Every single time I make a mistake.
- Only when I make the same mistake repeatedly.
- Once in a while during the general feedback but not every single mistake



# Q&A –checklist–

2. How do you want your teacher to correct you?

written

spoken

both written and spoken



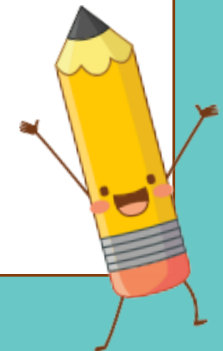
**SPEECH  
PRACTICE**

# Speech Practice

# Day 1

**Talk about an activity you like doing.**

- Where you do it
- Whom you do it with
- Why you enjoy it
- What kind of people you would recommend that activity to, and why



# Feedback

Criteria	3 – Very Good	2 - Good	1 – Needs Improvement
<b>Expression</b>	<ul style="list-style-type: none"> <li>•able to produce responses with vocabulary or expressions extending beyond what is given in the text or questions provided</li> <li>•uses idioms, phrasal verbs or collocations in his speech</li> </ul>	<ul style="list-style-type: none"> <li>•able to use and maintain similar sentence structure from the text and questions provided</li> <li>•often uses the correct parts of speech in his answers</li> </ul>	<ul style="list-style-type: none"> <li>•able to convey idea in basic words and phrases</li> <li>•often makes mistakes in using the parts of speech</li> </ul>
<b>Content</b>	<ul style="list-style-type: none"> <li>•produces fairly substantial and coherent speech</li> <li>•uses cohesive devices</li> </ul>	<ul style="list-style-type: none"> <li>•sometimes inconsistent in obtaining coherence in his speech</li> <li>•tends to discuss in a roundabout way</li> </ul>	<ul style="list-style-type: none"> <li>•conveys very limited ideas or incoherent information</li> <li>•slightly incomprehensible most of the time</li> </ul>
<b>Delivery</b>	<ul style="list-style-type: none"> <li>•speaks fluently and with some confidence</li> <li>•able to self-correct</li> </ul>	<ul style="list-style-type: none"> <li>•able to express his ideas but with pauses</li> </ul>	<ul style="list-style-type: none"> <li>•hesitates frequently and often needs prompting and support</li> </ul>



**SPEECH  
PRACTICE**

# Homework

## Day 2

**Talk about your favorite animal.**

- What kind of animal it is
- How does it look (size, color, etc.)
- What it eats
- Why you like this animal

