

SPEECH PRACTICE

Day 38



LESSON FLOW

- 1. Q and A**
- 2. Speech Practice**
- 3. Feedback**
- 4. Homework**



**SPEECH
PRACTICE**

Q & A

**SPEECH
PRACTICE**

Speech Practice

Day 37

Talk about your favorite music.

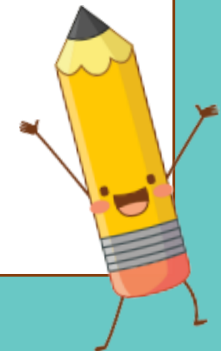
- What it is
- Who the artist is
- How often you listen to it
- Why you listen to this



Day 38

Talk about a time when you received money as a gift.

- Who gave it to you
- When it was given to you
- What you did with it
- How you felt about it



Feedback

Criteria	3 – Very Good	2 - Good	1 – Needs Improvement
Expression	<ul style="list-style-type: none"> •able to produce responses with vocabulary or expressions extending beyond what is given in the text or questions provided •uses idioms, phrasal verbs or collocations in his speech 	<ul style="list-style-type: none"> •able to use and maintain similar sentence structure from the text and questions provided •often uses the correct parts of speech in his answers 	<ul style="list-style-type: none"> •able to convey idea in basic words and phrases •often makes mistakes in using the parts of speech
Content	<ul style="list-style-type: none"> •produces fairly substantial and coherent speech •uses cohesive devices 	<ul style="list-style-type: none"> •sometimes inconsistent in obtaining coherence in his speech •tends to discuss in a roundabout way 	<ul style="list-style-type: none"> •conveys very limited ideas or incoherent information •slightly incomprehensible most of the time
Delivery	<ul style="list-style-type: none"> •speaks fluently and with some confidence •able to self-correct 	<ul style="list-style-type: none"> •able to express his ideas but with pauses 	<ul style="list-style-type: none"> •hesitates frequently and often needs prompting and support

**SPEECH
PRACTICE**

Homework

Day 39

Talk about a museum you have visited and liked.

- What kind of museum it was
- When you went there
- What you saw and did there
- Why you liked this museum

