

SPEECH PRACTICE

Day 40



LESSON FLOW

- 1. Q and A**
- 2. Speech Practice**
- 3. Feedback**
- 4. Homework**



**SPEECH
PRACTICE**

Q & A

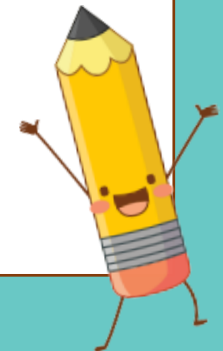
**SPEECH
PRACTICE**

Speech Practice

Day 39

Talk about a museum you have visited and liked.

- What kind of museum it was
- When you went there
- What you saw and did there
- Why you liked this museum



Day 40

Talk about a national day in your country.

- What day it is
- How it is celebrated
- What the historical significance of this day is
- How you feel about this national day



Feedback

Criteria	3 – Very Good	2 - Good	1 – Needs Improvement
Expression	<ul style="list-style-type: none"> •able to produce responses with vocabulary or expressions extending beyond what is given in the text or questions provided •uses idioms, phrasal verbs or collocations in his speech 	<ul style="list-style-type: none"> •able to use and maintain similar sentence structure from the text and questions provided •often uses the correct parts of speech in his answers 	<ul style="list-style-type: none"> •able to convey idea in basic words and phrases •often makes mistakes in using the parts of speech
Content	<ul style="list-style-type: none"> •produces fairly substantial and coherent speech •uses cohesive devices 	<ul style="list-style-type: none"> •sometimes inconsistent in obtaining coherence in his speech •tends to discuss in a roundabout way 	<ul style="list-style-type: none"> •conveys very limited ideas or incoherent information •slightly incomprehensible most of the time
Delivery	<ul style="list-style-type: none"> •speaks fluently and with some confidence •able to self-correct 	<ul style="list-style-type: none"> •able to express his ideas but with pauses 	<ul style="list-style-type: none"> •hesitates frequently and often needs prompting and support

**SPEECH
PRACTICE**

Homework

Day 41

Talk about an athlete you like.

- Who it is
- What sports he/she does
- How does this athlete look like
- Why you like this athlete

