

# SPEECH PRACTICE

Day 6



# LESSON FLOW

- 1. Q and A**
- 2. Speech Practice**
- 3. Feedback**
- 4. Homework**



**SPEECH  
PRACTICE**

**Q & A**

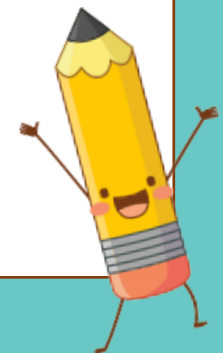
**SPEECH  
PRACTICE**

# Speech Practice

## Day 5

**Talk about your best birthday celebration.**

- When it was
- Where it took place
- What you did
- Why it is the best



## Day 6

# Talk about your breakfast.

- What time you eat breakfast
- What food or drinks you usually have
- What you do while having breakfast
- How important breakfast is for you



# Feedback

| Criteria          | 3 – Very Good   | 2 - Good  | 1 – Needs Improvement   |
|-------------------|---|---|---|
| <b>Expression</b> | <ul style="list-style-type: none"> <li>•able to produce responses with vocabulary or expressions extending beyond what is given in the text or questions provided</li> <li>•uses idioms, phrasal verbs or collocations in his speech</li> </ul> | <ul style="list-style-type: none"> <li>•able to use and maintain similar sentence structure from the text and questions provided</li> <li>•often uses the correct parts of speech in his answers</li> </ul> | <ul style="list-style-type: none"> <li>•able to convey idea in basic words and phrases</li> <li>•often makes mistakes in using the parts of speech</li> </ul> |
| <b>Content</b>    | <ul style="list-style-type: none"> <li>•produces fairly substantial and coherent speech</li> <li>•uses cohesive devices</li> </ul>  | <ul style="list-style-type: none"> <li>•sometimes inconsistent in obtaining coherence in his speech</li> <li>•tends to discuss in a roundabout way</li> </ul>   | <ul style="list-style-type: none"> <li>•conveys very limited ideas or incoherent information</li> <li>•slightly incomprehensible most of the time</li> </ul>  |
| <b>Delivery</b>   | <ul style="list-style-type: none"> <li>•speaks fluently and with some confidence</li> <li>•able to self-correct</li> </ul>  | <ul style="list-style-type: none"> <li>•able to express his ideas but with pauses</li> </ul>  | <ul style="list-style-type: none"> <li>•hesitates frequently and often needs prompting and support</li> </ul>   |

**SPEECH  
PRACTICE**

# Homework



## Day 7

**Talk about the city you want to live in.**

- What city and where it is
- What it is known for
- The advantages and disadvantages of living in that city

