

For Advanced Kids Learners

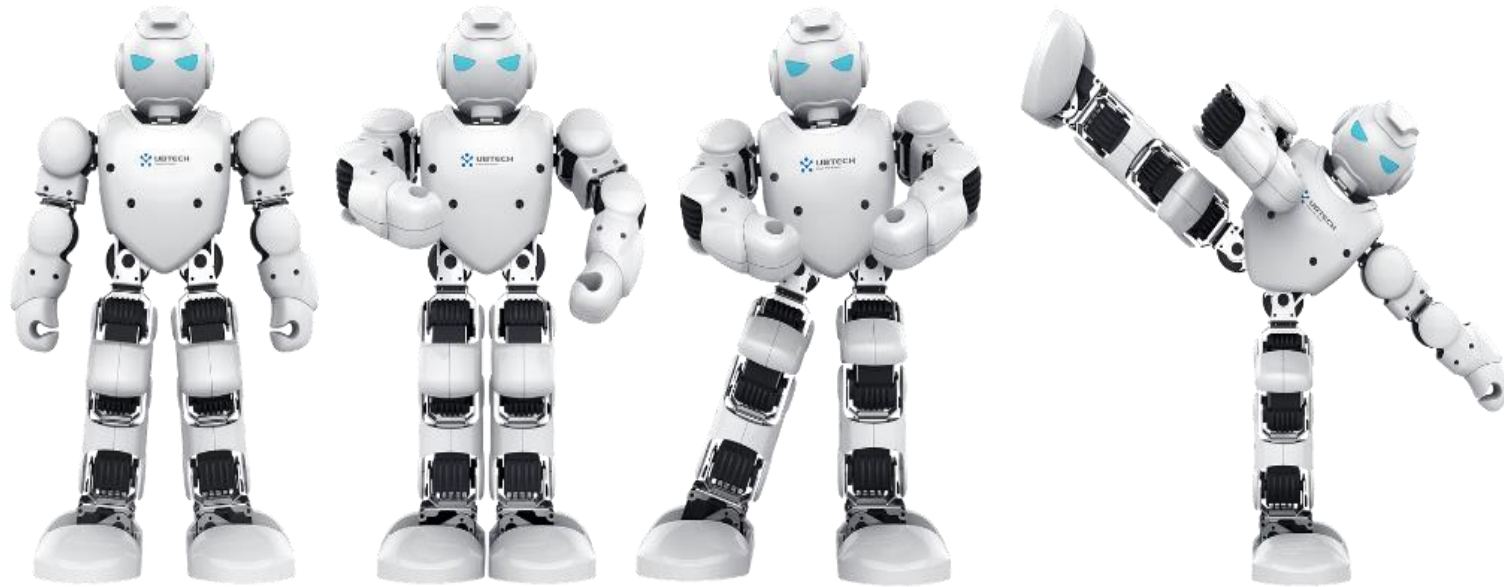
Book 1

# Time to Talk

Lesson 19\_ The History of Robots



- Warm-up questions



What are these?  
What do you know about them?

- Read and learn

## The History of Robots

**Robots** are becoming popular **nowadays**. They were invented to help people do some work. They are **machines** which are **as intelligent and as creative as** humans. But do you know when the first robot was invented?

It started when Archytas, a **Greek mathematician**, invented a dove two thousand years ago.



### robot

A machine that can perform some of the tasks of a human being.

- **Learn some new words.**



## nowadays

During these present times.



## machine

A device with parts that work together to perform a task.



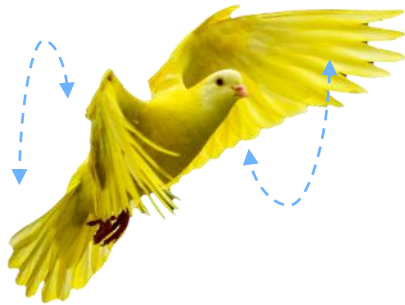
## Greek mathematician

A person from Greece who is good at mathematics.

- **Read and learn**

The robot bird could **flap** its wings and fly in the air at a low level. Scientists believed that the bird could fly because of the **steam**. When the air was released, it flapped its wings and flew in the sky as far as 200 meters. It was the first robot ever invented.

Many years later, it has been spread around the world and people have begun to create robots that are identical to humans.

**flap**

To move the wings up and down.

**steam**

Air or water vapor formed by boiling.

- Choose the correct word.

steam

flap

robot

nowadays

Greek mathematician

machine

- \_\_\_\_\_ 1. A machine that can perform some of the tasks of a human being.
- \_\_\_\_\_ 2. A person from Greece and is good at mathematics.
- \_\_\_\_\_ 3. It refers to the present times.
- \_\_\_\_\_ 4. This refers to a device with parts that work together to perform a task.
- \_\_\_\_\_ 5. It means to move the wings up and down especially of a bird.
- \_\_\_\_\_ 6. It refers to the air formed by the boiling water.



- Grammar



## as + adjective + as

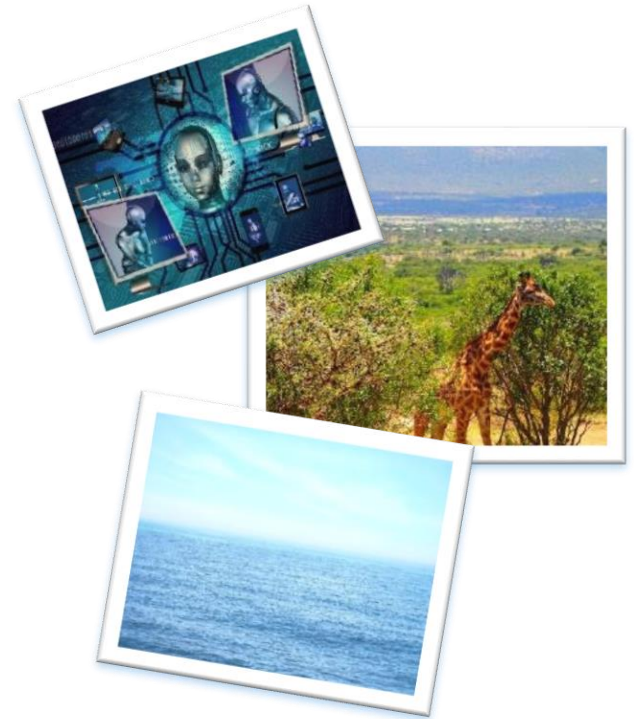
*used to make comparisons when the things being compared are equal in some way.*

### Examples

1. The machines are **as intelligent as** humans.
2. It could fly high **as far as** 200 meters.

**+** Fill in the blanks using **as + adjective + as**.

1. The giraffe is \_\_\_\_\_ the tree. (tall)
2. The sky is \_\_\_\_\_ the water. (clear)



- **Answer the following questions.**



1. Who invented the first ever robot?

---

2. What was his invention and what could it do?

---

3. How did the automaton flap its wings?

---

4. Do you think his robot was a great help?

---